

[Subscribe](#)[Past Issues](#)[Translate ▼](#)[View this email in your browser](#)

Pacific Institute *for the* Mathematical Sciences

PIMS MONTHLY CONNECTION | **November 2024**

Hello from PIMS

Welcome to the November edition of the PIMS Newsletter! Below, we have curated a list of events and meetings taking place at our member universities this month.

PIMS News:

- [The Pacific Institute for the Mathematical Sciences Partners with Distriq, the Quantum Innovation Zone of Quebec](#)

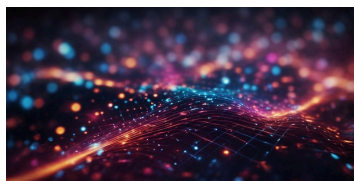
Opportunities Across the Network:

- **Deadline Approaching:** [2025 CRM-Fields-PIMS Prize](#)
- **Nominations Closing Soon:** [2025 - 2026 PIMS Postdoctoral Competition](#)
- **Registration is Now Open:** [Winter 2025 PIMS Network-Wide Courses](#)

Feature Events:

- **November 6th:** [PIMS Postdoctoral Fellow Seminar: Himanshu Gupta](#)
- **November 7th:** [2024 Women in AI Canada In-Person Career Fair](#)
- **November 9th:** [AI Is Here. How Can We Help All the Humans? Answer: Math, With a Twist](#)
- **November 14th:** [PIMS Network Wide Colloquium: Pamela Harris](#)

PIMS NEWS



[The Pacific Institute for the Mathematical Sciences Partners with Distriq, the Quantum Innovation Zone of Quebec](#)

[Subscribe](#)[Past Issues](#)[Translate ▼](#)

establishing a collaborative partnership to advance quantum science and mathematical research. This dynamic alliance between PIMS' professional development program, [Math to Power Industry \(M2PI\)](#), and Distriq aims to foster innovation and excellence in both quantum technologies and mathematical research. Distriq, the Quantum Innovation Zone of Quebec is an accelerator ecosystem for quantum innovations that catalyzes expertise and infrastructures and connects collaborative initiatives. Together, we are committed to advancing the frontiers of quantum and mathematical sciences.

[Read the Full News Article](#)

PIMS NETWORK OPPORTUNITIES

[Deadline Approaching: 2025 CRM-Fields-PIMS Prize](#)

The [Centre de recherches mathématiques](#) (CRM), the [Fields Institute](#), and the Pacific Institute for the Mathematical Sciences (PIMS) are now accepting nominations for the CRM-Fields-PIMS Prize.



As the premier research prize jointly awarded by three Canadian mathematics institutes, the CRM-Fields-PIMS Prize honours individuals who have made outstanding advancements in mathematical research. The recipient, chosen by a selection committee representing all three institutes, will receive a monetary award and the opportunity to deliver a lecture at each institute within one year of receiving the prize.

The deadline for nominations is **November 1, 2024**. We

[Subscribe](#)[Past Issues](#)[Translate ▼](#)[View Nomination Details](#)

[Nominations Closing Soon: 2025 - 2026 PIMS Postdoctoral Competition](#)

PIMS invites nominations of outstanding young researchers in the mathematical sciences for postdoctoral fellowships beginning in the **academic year 2025 - 2026**. Candidates must be nominated by a scientist or department affiliated with PIMS. These fellowships are intended to supplement the support provided by the sponsor, and are tenable at any of the PIMS Canadian member universities: *the University of Alberta, the University of British Columbia, the University of Calgary, the University of Lethbridge, the University of Manitoba, the University of Regina, the University of Saskatchewan, Simon Fraser University, and the University of Victoria.*

PLEASE NOTE: We wish to inform sponsors of an impending adjustment to the PIMS PDF funding structure. **Beginning with the 2026/2027 academic year, sponsors will be required to contribute at least \$30,000 in matching funds, an increase from the previous requirement of \$25,000.**

Award decisions are made by the PIMS PDF Review Panel, and are based on the scientific qualifications of the candidate, their demonstrated scientific leadership, the fit between the research interests of the candidate and those of the sponsor, and the adequacy of matching funds. We strongly encourage people from historically underrepresented groups to apply for these positions. **Nominations close on December 1, 2024.**

[View Nomination Details](#)

[Subscribe](#)[Past Issues](#)[Translate ▼](#)**NOW OPEN!****2025
PIMS NETWORK-WIDE
COURSES**

- 10 new courses for Winter 2025 term
- Graduate students at PIMS member universities encouraged to apply

COURSES WILL BEGIN IN JANUARY 2025

2025 PIMS Network-Wide Courses

10 new PIMS Network-Wide Graduate Courses have been approved for the upcoming academic term. Students at Canadian PIMS member universities participating in any of these courses may apply for graduate credit via the [Western Deans Agreement](#). Please encourage interested graduate students in your department(s) to apply.

Network-Wide Courses:

- *A Primer to Arithmetic Statistics (Stanley Yao Xiao/UNBC)*
- *Advances in Theoretical and Computational Biology (Anotida Madzvamuse/UBC)*
- *Algebraic Topology (Martin Frankland/UR)*
- *Analytic and Diophantine Number Theory with Applications to Arithmetic Geometry (Nils Bruin/SFU)*
- *Fundamental Models in Fluid Dynamics (David Goluskin/UV)*
- *Mathematical Classical Mechanics (Lior Silberman/UBC)*
- *Mathematical Ecology (Rebecca Tyson/UBC)*
- *Spectral Methods for PDEs (Shaun Lui/UM, Mikael Slevinsky/UM)*
- *Stochastic Analysis-Stochastic Differential Equations (Yaozhong Hu/UA)*
- *Translation Surfaces (Jayadev Athreya/UW, Ozgur Yilmaz/UBC)**

Registration for the Winter 2025 term courses is now open. Courses will begin in January 2025 (*Please note that the course "Translation surfaces" will commence in March 2025). Please be aware that the WDA deadline at some sites may be as early as mid-November for courses beginning in January. We encourage students to check the details of the courses they are interested in and contact the course instructors as soon as possible.

[View Courses Details](#)

FEATURE EVENTS

[Subscribe](#)[Past Issues](#)[Translate ▼](#)

[Himanshu Gupta](#)

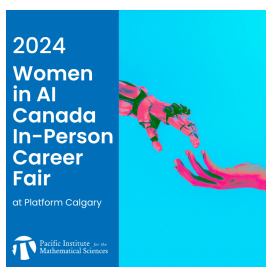
November 6, 2024: Online

9:30 AM PT | 10:30 AM MT | 11:30 AM CT

Total Positivity, Compounds, and Dodgson Condensation

Himanshu Gupta is a PIMS postdoctoral fellow at the University of Regina under the supervision of Prof. Shaun Fallat. His research focuses on Algebraic Graph Theory and the study of graphs using algebraic methods. He enjoys working with Matrices, Groups, Finite Fields, and other algebraic objects to study various structural properties of graphs.

[See Event Details](#)



[2024 Women in AI Canada In-Person Career Fair](#)

November 7, 2024: Platform Calgary

4 PM MT

Are you in the field of AI, looking to enhance your career, network with like-minded professionals, and contribute to a more inclusive AI community? Look no further! Join us for an exciting event designed just for you.

The Women in AI Career Fair (open to all genders) is a unique gathering that aims to unite professionals and enthusiasts at various stages of their careers. Whether you're an early-career professional or a seasoned mid-level expert, this event provides the perfect platform for learning, networking, and mentorship. **Registration is required for this event.**

Join us for an engaging afternoon/evening of learning, networking, and inspiration as we pave the way toward a brighter, more diverse future in AI!

[Subscribe](#)[Past Issues](#)[Translate ▾](#)

AI Is Here. How Can We Help All the Humans? Answer: Math, With a Twist

November 9, 2024: University of British Columbia

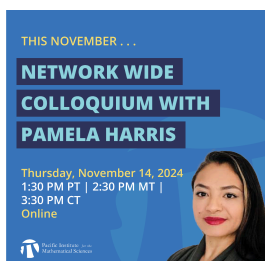
11:30 AM PT

PIMS welcomes Professor Po-Shen Loh to UBC on November 9th for a **FREE** talk titled "**AI is Here. How Can We Help All the Humans? Answer: Math, With a Twist**" aimed at educators, parents and high-school students.

Researchers and companies are racing to be the first to create Artificial General Intelligence, which explicitly intends to broadly surpass human intelligence. Every few months, there are new reports of AI being able to perform more and more sophisticated tasks, even reaching the breakthrough of solving International Math Olympiad problems.

Join Po-Shen, a renowned math professor at Carnegie Mellon University and former coach of the USA International Math Olympiad team, as he shares his innovative insights on aligning human incentives through game theory. The talk will also contain practical advice for parents and educators to help their students love and build the creative problem-solving skills which will be crucial to success in a post-AI world.

[View Event Details](#)



PIMS Network Wide Colloquium: Pamela Harris

November 14, 2024: Online

1:30 PM PT | 2:30 PM MT | 3:30 PM CT

[Subscribe](#)[Past Issues](#)[Translate ▼](#)

Sciences the University of Wisconsin - Milwaukee. She is the cohost the podcast "Mathematically Uncensored" and is the president and co-founder of *Lathisms: Latinxs and Hispanics in the Mathematical Sciences*. Her research interests are in algebra and combinatorics, particularly as these subjects relate to the representation theory of Lie algebras.

[View Event Details](#)

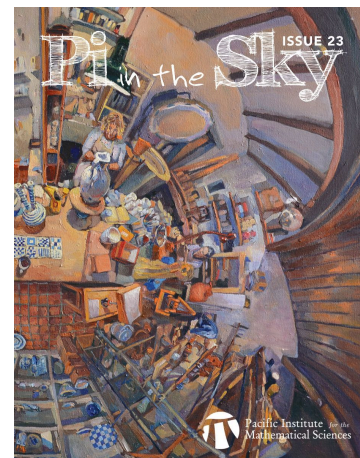
View our calendars for more meetings and events

[Scientific Programs](#)[Education Programs](#)[Industrial Programs](#)

MEDIA

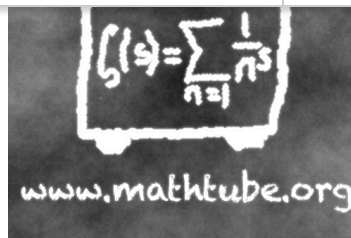
Pi in the Sky Issue 23 is Out Now!

Geared toward high school students and teachers, *Pi in the Sky* offers a fresh cultural perspective on mathematics, exploring curriculum topics from new and engaging angles. *Pi in the Sky* magazine is published by the Pacific Institute for the Mathematical Sciences and is available online. [Visit our website to read the issue!](#)



[Subscribe](#)[Past Issues](#)[Translate](#) ▼

Since 1996, PIMS has collected and maintained an archive of videos and lecture notes covering many areas of the mathematical sciences. If you missed any of the PIMS PDF Colloquium Lectures, visit www.mathtube.org to see these and other archives.



ABOUT PIMS

The **Pacific Institute for the Mathematical Sciences (PIMS)** was created in 1996 to promote discovery, understanding, and awareness in the mathematical sciences. PIMS has expanded from the mathematics community of Alberta and British Columbia to include Washington State, Saskatchewan, and Manitoba. Our mandate is to promote research in and applications of the mathematical sciences, to facilitate the training of highly qualified personnel, to create an equitable, diverse and inclusive community, to enrich public awareness of and education in the mathematical sciences, and to create mathematical partnerships with similar organizations in other countries in the Pacific Rim. PIMS funds Collaborative Research Groups, Post-Doctoral Fellowships, and individual events on a competitive basis.

We Want to Hear from You

Share your feedback on this month's newsletter and tell us what stories and news you would like to hear more of.

[Feedback](#)

Your Support Makes a Difference

PIMS education and outreach programs touch countless educators, students, and Indigenous communities. Some of our activities include summer schools, mathematics contests and meetings for educators. [Learn more](#)

[Donate to PIMS](#)

Follow PIMS and be a part of our community



Mailing address:

Pacific Institute for the Mathematical Sciences
 The University of British Columbia
 4176-2207 Main Mall
 Vancouver, BC V6T 1Z4
 Canada

Subscribe

Past Issues

Translate ▼

We acknowledge with gratitude that PIMS central office is located on the unceded, traditional, and occupied territory of the Coast Salish peoples. This includes the territories of the xwməθkwəy̓əm (Musqueam), Skwxwú7mesh (Squamish), and Səlilwətaʔ/Selilwitulh (Tsleil-Waututh) Nations.
www.native-land.ca